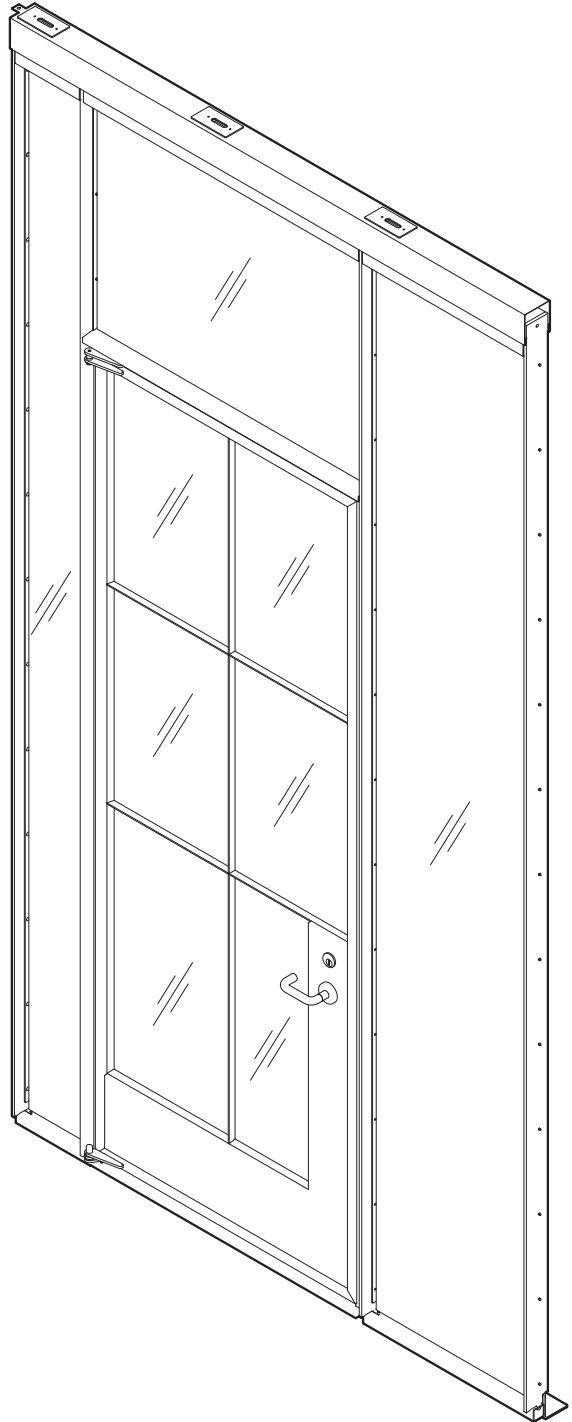
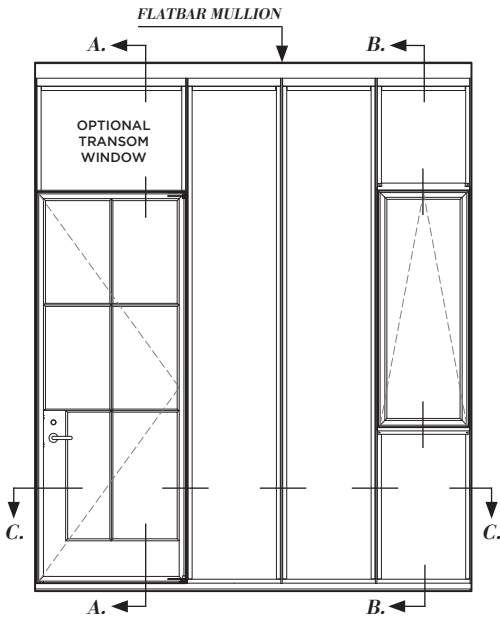


EXTERIOR KNOCKDOWN STOREFRONT SYSTEM

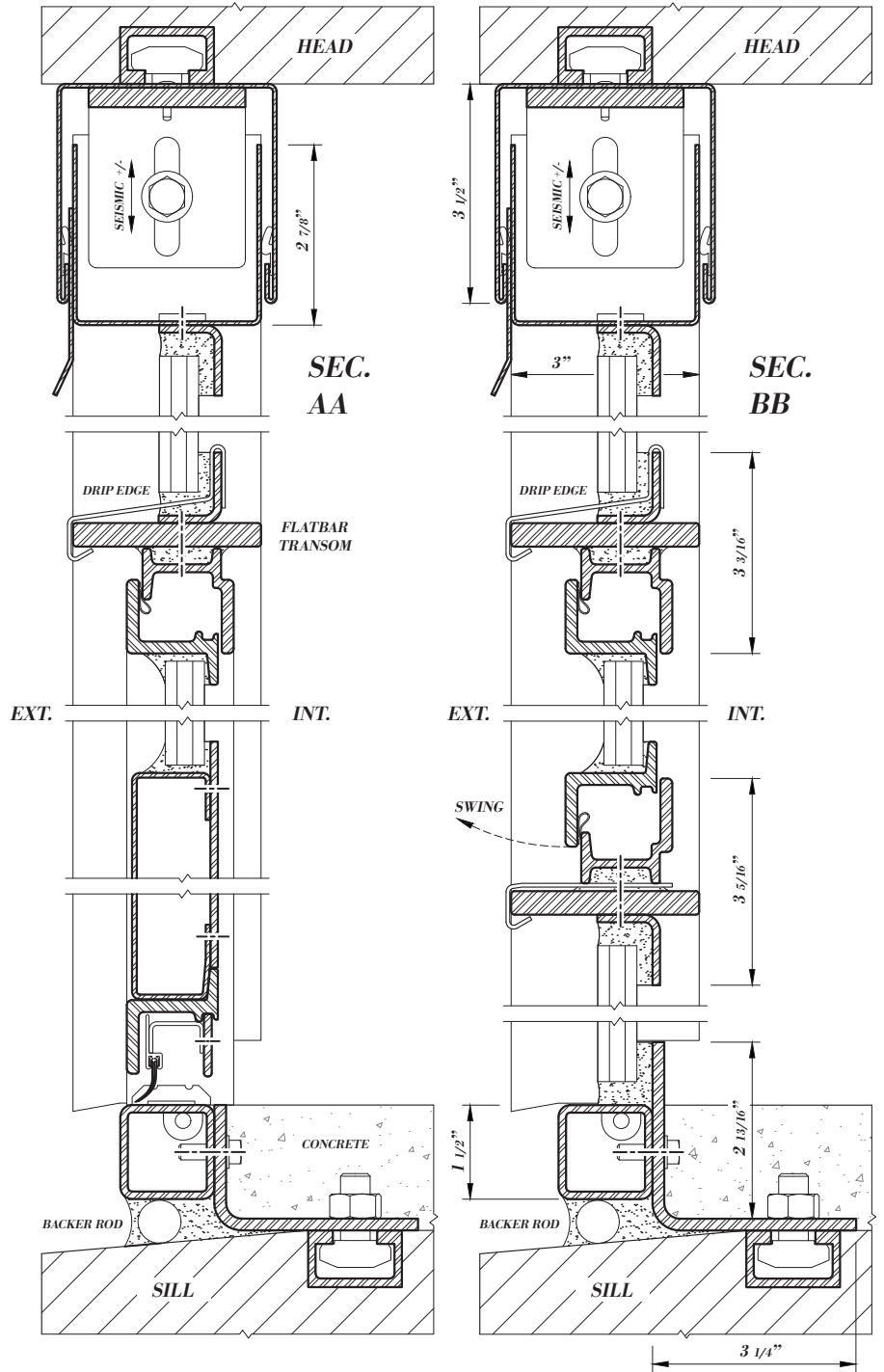
- GRID CONFIGURATION CAN BE CUSTOMIZED TO FIT SPECIFIED DESIGN
- COMPATIBLE WITH ANY STUDIO CORTEZ DOOR OR WINDOW SYSTEM
- STANDARD 5/8" IGU GLAZING - UP TO 1"
- TRANSOM WINDOWS AVAILABLE
- BLACKENED STEEL WITH STANDARD SATIN CLEARCOAT - POWDERCOATING AVAILABLE UPON REQUEST
- STANDARD LITE WIDTH OF 24"
- MAXIMUM LITE HEIGHT OF 240"
- SEISMICALLY RESISTANT DESIGN



DOOR & WINDOW INTEGRATION



SHOWN WITH STANDARD CORTEZ SWING DOOR AND AWNING OPERABLE WINDOW



SECTION CC

