



STUDIO  
**CORTEZ**  
EST. 1983

**24** | **PRODUCT LOOKBOOK**  
CRAFT DOORS, WINDOWS & HARDWARE



# STUDIO CORTEZ

CRAFT FENESTRATION & HARDWARE

*Product Lookbook*  
*Standard Systems*

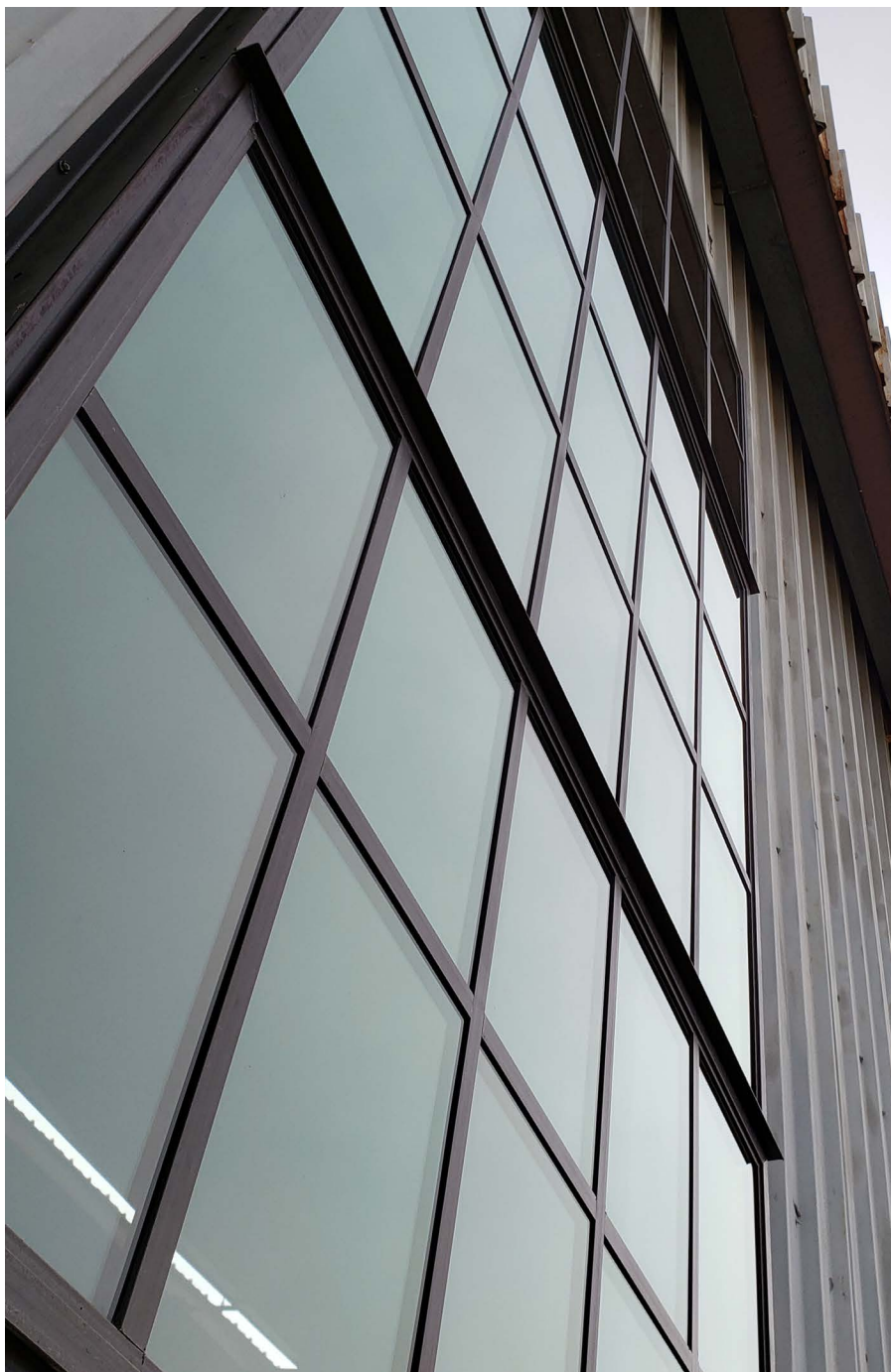
**2024**  
**Los Angeles**  
**CALIFORNIA**

*“Quality is not a mistake or merely stumbled upon...  
it results from a culture of dedicated focus and hard work.”*

*- Rick Cortez  
Founder*

# Content

<b>04</b>	<b>INTRODUCTION</b> A little bit about Studio Cortez - our story, philosophy and process.
<b>08</b>	<b>DOOR SYSTEMS</b> Our standard steel door systems - features, options and dimensions.
<b>14</b>	<b>WINDOW SYSTEMS</b> Our standard steel window systems - fixed and operable systems, glazing options and dimensions.
<b>18</b>	<b>WALLS &amp; PARTITIONS</b> Interior and exterior glass wall systems - features, options and dimensions.
<b>24</b>	<b>HARDWARE &amp; CUSTOMS</b> Information about our signature hardware and custom-built solutions.
<b>30</b>	<b>INFO &amp; CONTACT</b> Get in touch with us.



## The Studio Cortez Story

For nearly four decades, we were a design-build firm renovating historic buildings across Los Angeles. Most of our work was converting neglected, century-old buildings into modern luxury offices.

These buildings, however, were protected by LA's strict Historic Preservation Program and thus required very specific windows that not only satisfied historic requirements, but also worked with modern architectural design.

We had such a hard time sourcing windows that met our needs, that we ended up making them ourselves. Dozens of projects later, we had developed our own unique make of steel doors and windows that looked good in virtually any context.

As we started getting requests from other firms for our doors and windows, we ultimately decided to make them available to the world as our own line of products.

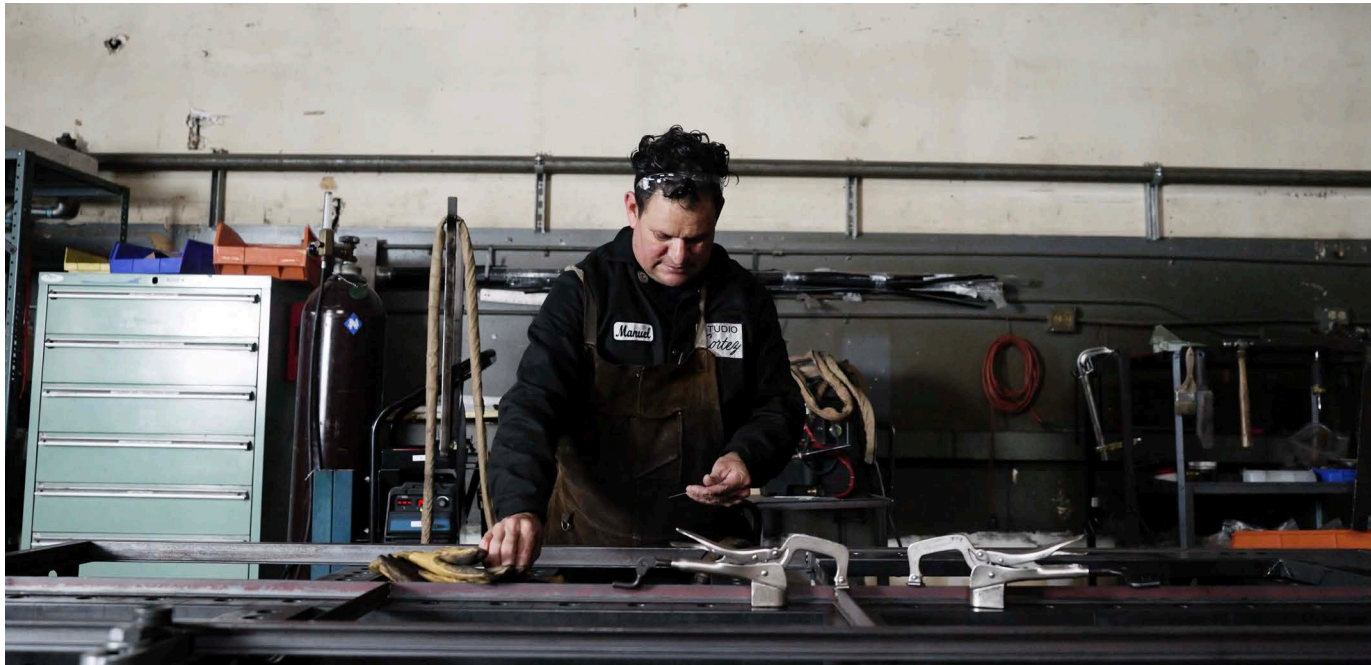
Today we are fully committed to crafting our signature steel doors and window systems to the highest standard we can.

## Our Craft and Process

Though much of our design and production is standardized, our unique value lies in customizable products that balance historic and modern. Our goal is to create doors and windows inspired by those made 100 years ago, designed to fit contemporary architecture and built to last for another century. Our timeless designs will look as good then as they do now.

In our desire to show our process, we adopted a durable clear lacquer as our standard finish. This allows us to express the inherent character of the materials along with the skill of the craftspeople who make them. This gives our work that one-of-a-kind look found only in true, handmade products.

Our depth of knowledge spans every aspect of creating well-balanced and timeless spaces and our products are the culmination of that experience. They represent not only our ability but also a lifetime of design, execution and refinement - all distilled into a singular expression of craft.



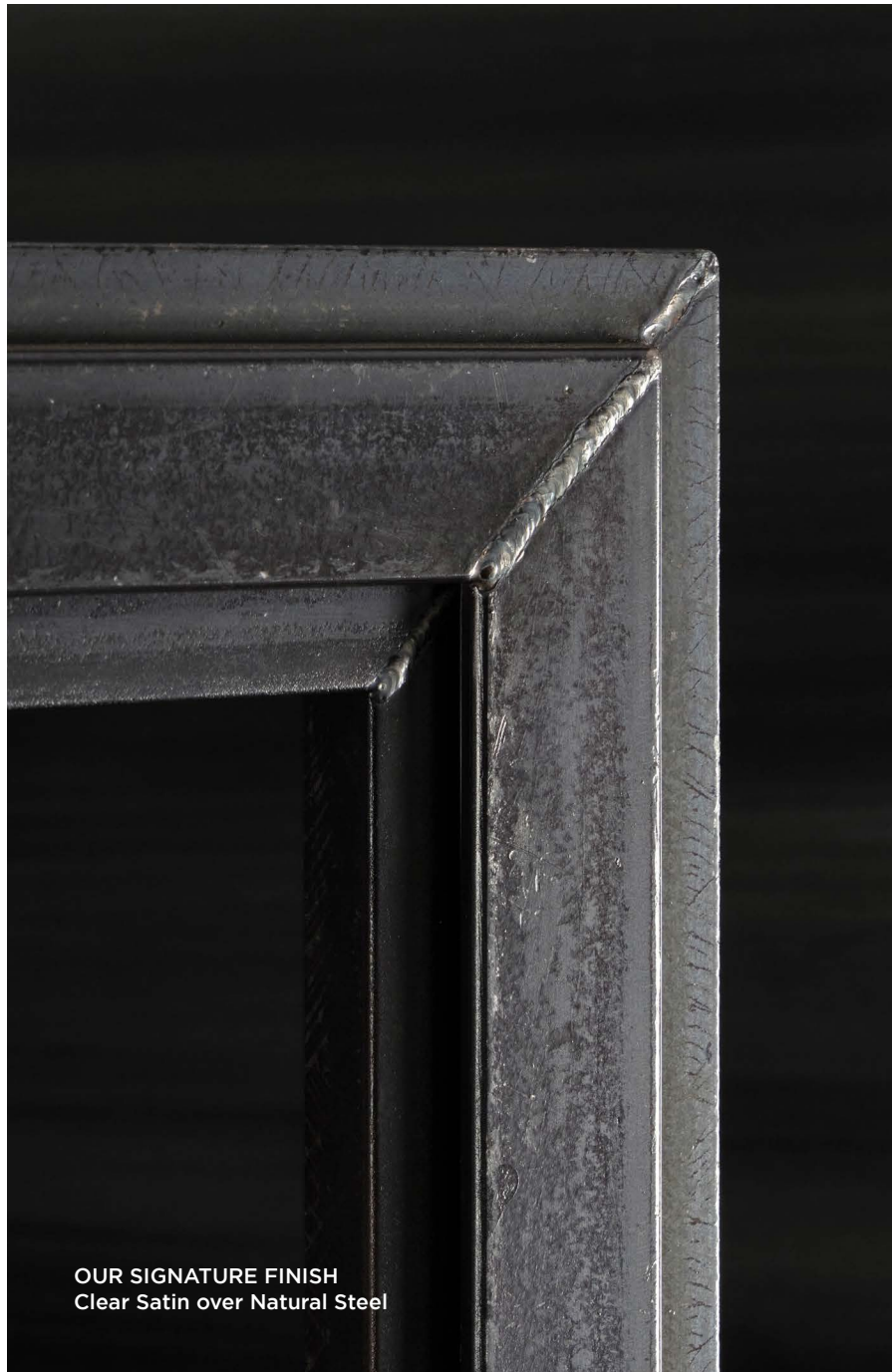
## Heritage at a Glance

Our founding principle is “design with quality of character.” This means we embrace the nature of the materials and environments for which we create. To not impose our will, rather reveal and enhance the inherent qualities already there.

The use of a refined satin clearcoat over natural mill scale or hand-blackened patina means you can see the welds, the texture of the steel, and the rich colors that will develop with time and use.

This sets our products apart from others that may hide poor workmanship under a coat of opaque paint or powder-coating. While we also offer powder-coating as an option, you will always recognize our products by their quality that is always on display.

Our products don't wear out... they get worn in.



**OUR SIGNATURE FINISH**  
Clear Satin over Natural Steel



**OTHER MANUFACTURERS**  
Black Paint or Powder Coat

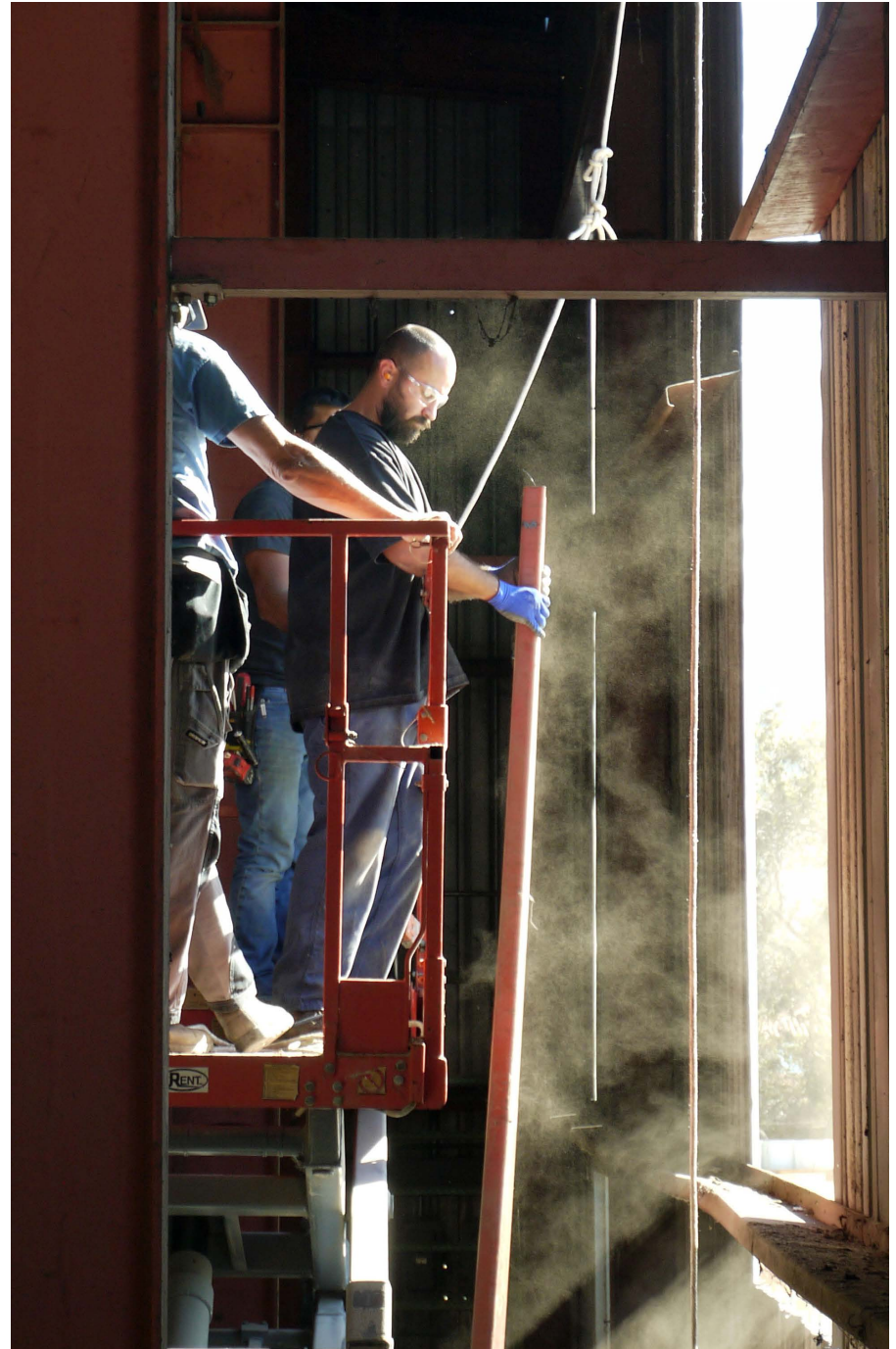
## A Lifetime of Experience

With over four decades of history not only as architects, but also as builders and manufacturers, we understand every aspect of putting buildings together.

That is how we are able to design, produce and install our products from beginning to end. As a vendor with full-service capability, we minimize the back and forth of coordinating between multiple vendors to get things done.

Not only does this ensure consistent quality every step of the way, but it minimizes management as well as costly mistakes from potential miscommunication.

With a soup-to-nuts provider, there is no finger pointing between vendors if any issues occur. We are responsible for everything we do and our product and workmanship is backed by warranty.





# Door Systems

A masterful balance of historic and modern.

We produce two styles of highly-customizable doors: historically inspired Swiss steel doors and heavy duty tube steel doors, both configurable for interior and exterior use. We also can customize either door style into a sliding system.

**CORTEZ** Steel Doors integrate the nature of our process and materials, building character with every use. Each nick and scratch that accumulates is not seen as a blemish, but embraced as a sign of ownership.

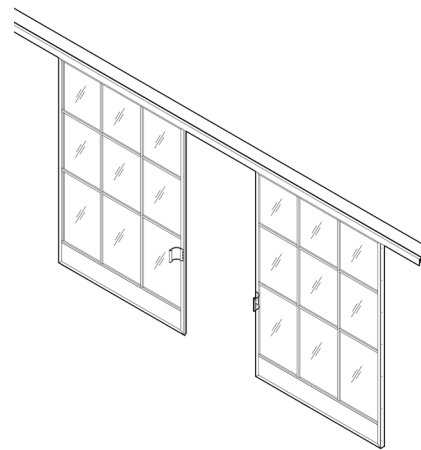
A piece of perpetual perfection that only gets better with time.



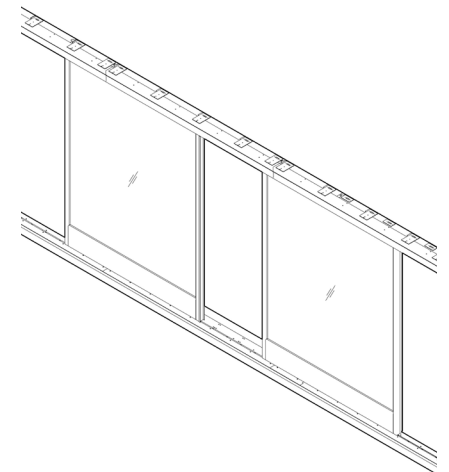
**SWISS STEEL**



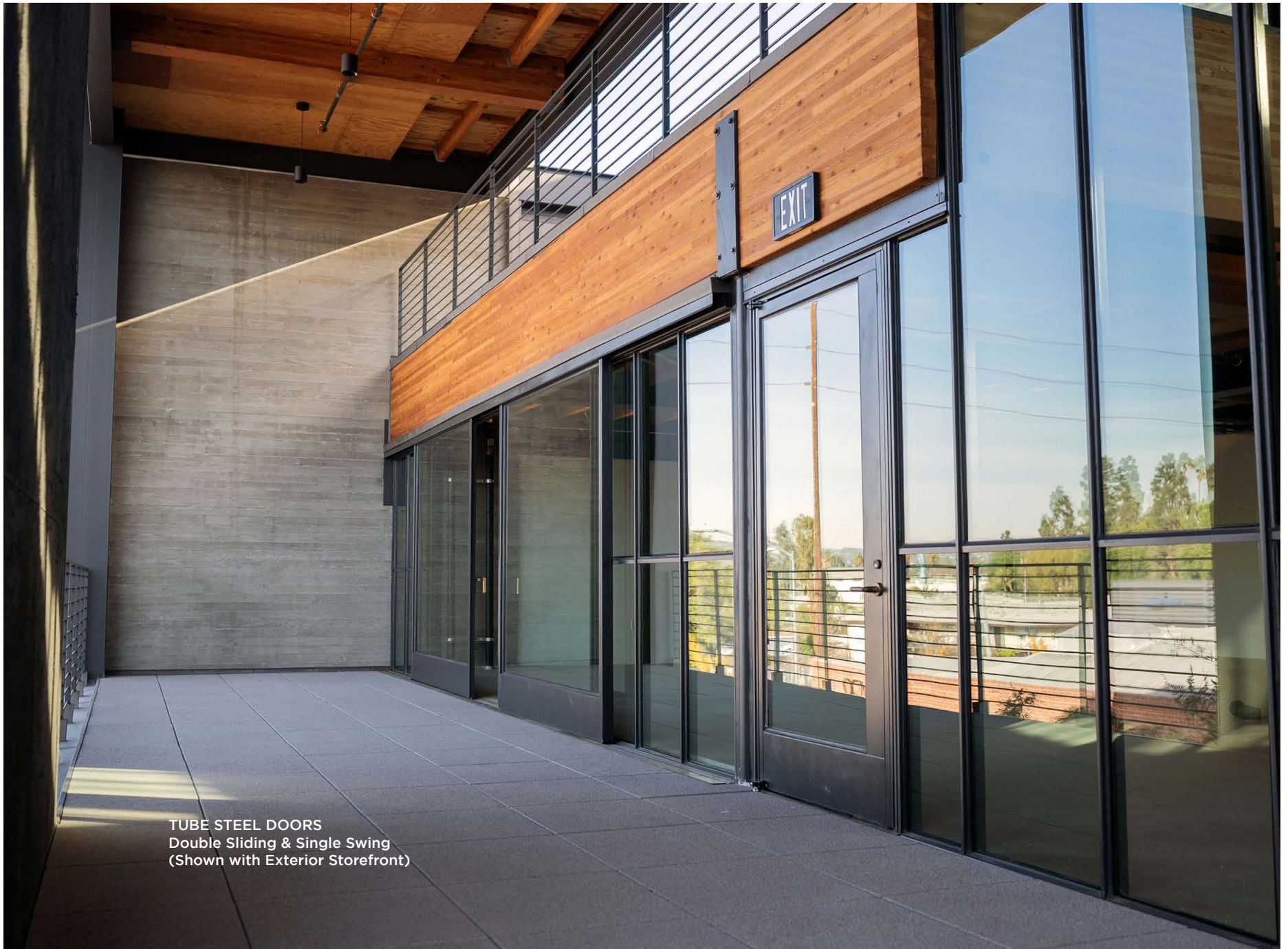
**TUBE STEEL**



**SWISS SLIDING**



**TUBE SLIDING**



**TUBE STEEL DOORS**  
Double Sliding & Single Swing  
(Shown with Exterior Storefront)



## Swiss Steel Doors

A masterful balance of historic and modern.

Inspired by factory doors of the industrial age and designed for any modern context, Swiss steel doors are built with historic, hot-rolled profiles sourced from the finest mills in Switzerland.

Sporting thin sightlines and customizable grid configurations, these doors introduce a vintage element to the architecture while keeping a clean and modern aesthetic.

Available for interior and exterior and in standard sizes of 3'x8' or 3'x9.5' with custom sizes available.

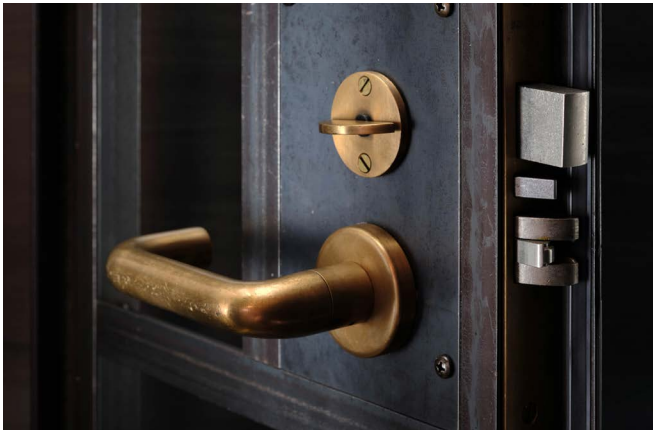
Max custom width of 42" and max height of 114"

SWISS STEEL DOOR  
(Shown with Interior Partition)



## SIGNATURE HINGES

Comes standard with our signature **CORTEZ** pivot hinge. Industrial yet elegant, this allows the door to be easily removable for service. We also offer welded-on barrel hinges for an alternative aesthetic.



## STANDARD LOCKS

Fits industry standard **SCHLAGE** L-Series mortise locks, and can be fitted with electronic access control. This gives you the option to select any of the handles and locksets out of **SCHLAGE'S** hardware catalog.



## KICKPLATES

Our standard configuration comes with a 10" kickplate, the minimum requirement for commercial applications. Residential doors can opt for a lower kick or no kick at all.



DOUBLE SLIDING TUBE DOORS  
(Shown with Exterior Storefront)

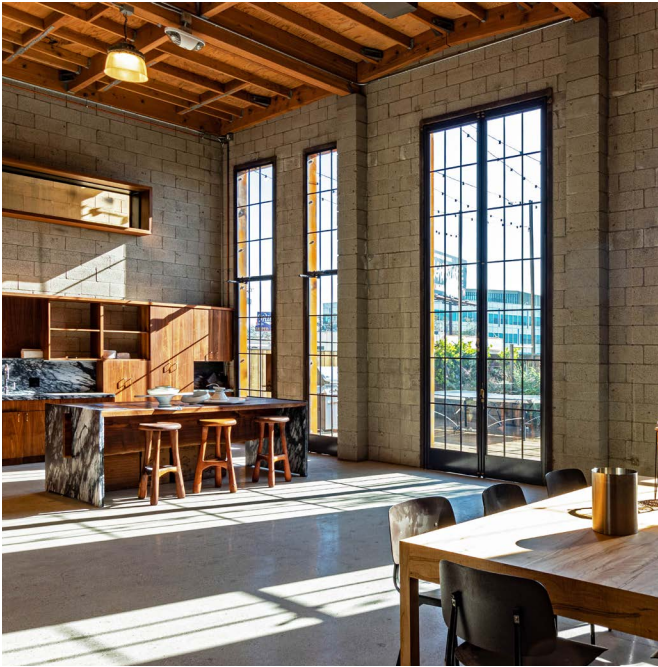
## Tube Steel Doors

Sturdy and minimal, tube steel doors are designed for heavier-duty applications and larger format doors.

The thicker profile contrasts well with slim lines and creates a bold look. Also available with customizable grid configurations, these doors are perfect for stunning exterior entryways.

Available for interior and exterior, comes in standard 3'x9' or 3'6"x10' with custom sizes available and can be fitted with electronic access control.

Max width of 120" and max height of 144"



## LARGER FORMATS

For extra tall or wide format doors, tube steel offers the structural rigidity necessary to hold the weight and maintain proper operation over time.

For doors over 114" tall or 42" wide, tube steel must be used.

## HARDWARE

Depending on the size and conditions, tube steel doors can be mounted on swing hinges as well as pivot hinges. They are also perfect for sliding applications.

Top mount or embedded floor closers recommended to assist with operation.





GRIDDED WINDOWS  
Fixed and Operable Awning  
(Shown with Over Center Operators)

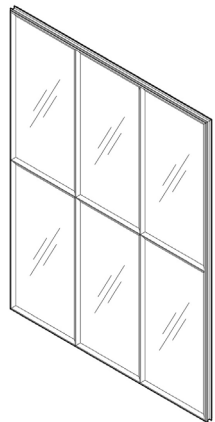
# Window Systems

**CORTEZ** windows are not just manufactured... they are crafted.

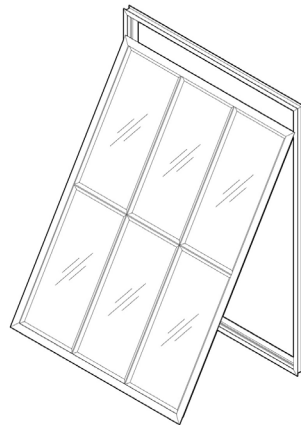
Built to fit custom openings of all shapes and sizes, we offer fixed windows as well as operable windows in three available configurations; top hinged (awning), bottom hinged (hopper) and side hinged (casement).

Our grids have some of the thinnest sight-lines of any window system and display a unique quality of finish that can only be found in handmade products.

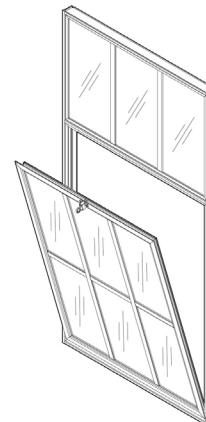
Flood your space with natural light by incorporating the ageless look of steel windows into your home or office.



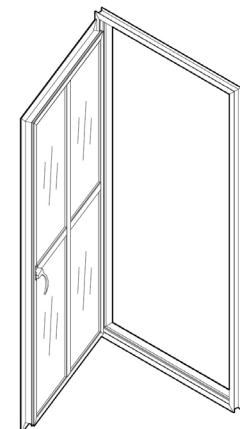
**FIXED GRID**



**AWNING**

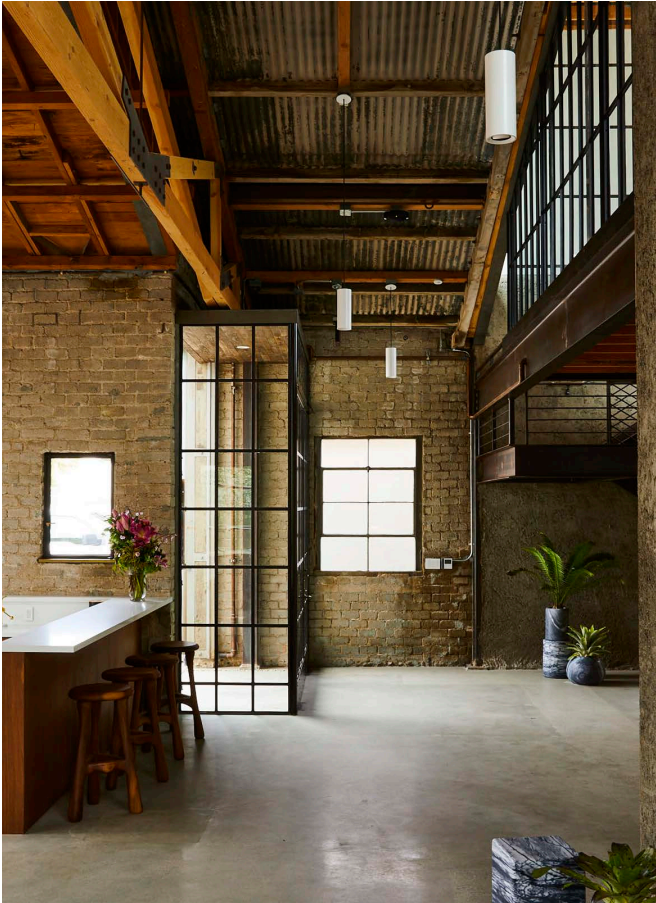


**HOPPER**



**CASEMENT**





## Fixed Window Systems

Fixed windows can be single pane or gridded. Grids can be configured as desired with sightlines available in 3 different widths. Available for interior and exterior.

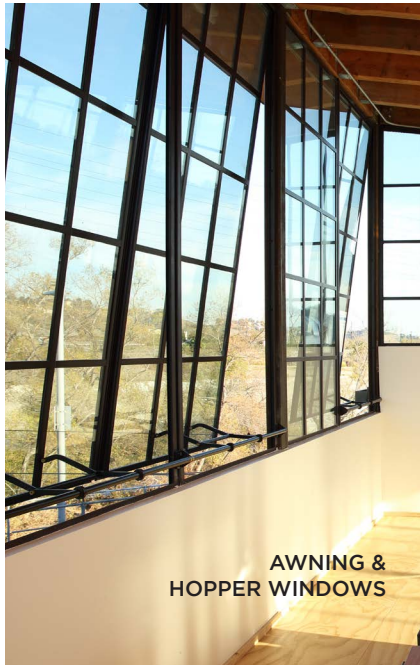
Max single sash width up to 120" and max single sash height up to 144"

# Operable Window Systems

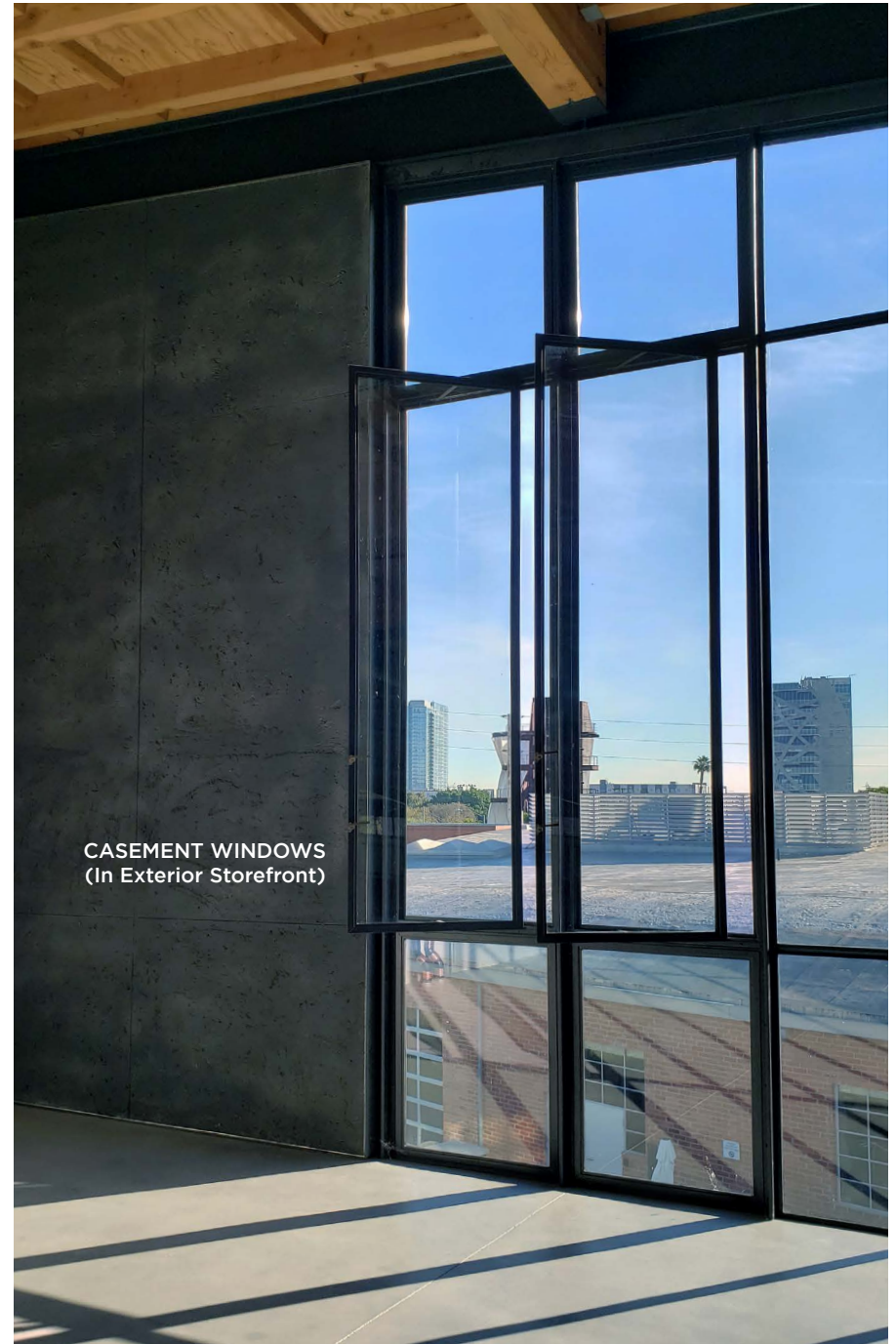
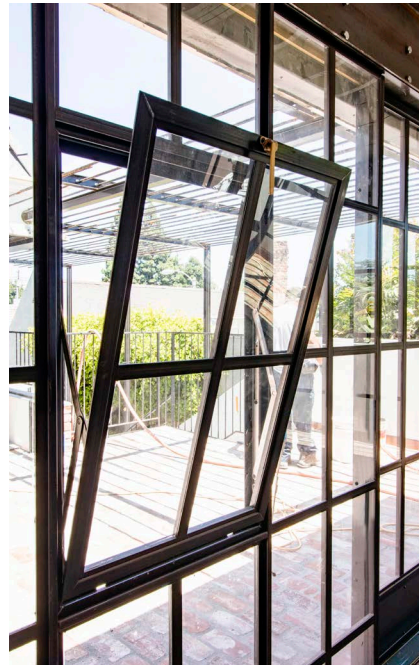
**CORTEZ** operable windows are compatible with any of our fixed systems and storefront systems. We manufacture awning, hopper, and casement windows with a variety of hinge and latch options.

Grids can be configured as desired and available for both interior and exterior.

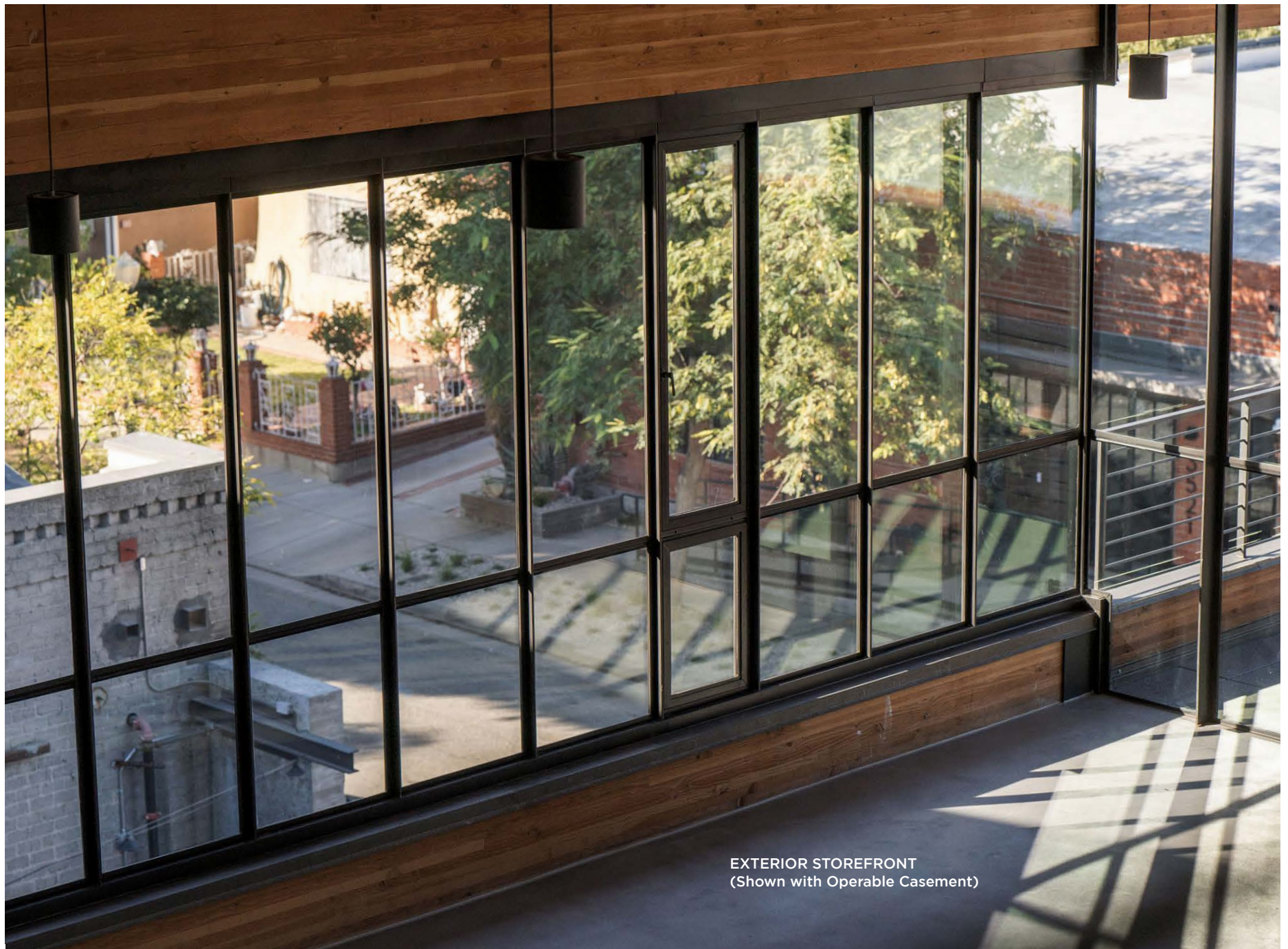
Max single sash size up to 28 sqft or 200lbs



AWNING &  
HOPPER WINDOWS



CASEMENT WINDOWS  
(In Exterior Storefront)



EXTERIOR STOREFRONT  
(Shown with Operable Casement)



## Walls & Partitions

Whether for an exterior storefront or an interior partition, **CORTEZ** glass wall systems are both beautiful and practical. Our profiles offer some of the thinnest sight lines available and are compatible with any of our other doors and operable windows.

Integrating the vintage feel of industrial steel with modern style, our glass wall and partition systems are perfect for both commercial and residential environments.



## Interior Knockdown Partition System

Our interior knockdown partitions elegantly create separation without diminishing the space.

Configurable with crossbars or kickplates, they are perfect for room dividers, conference spaces, and private offices.

Compatible with all **CORTEZ** interior door and window systems.

Max height of 144" with standard lite width of 24"

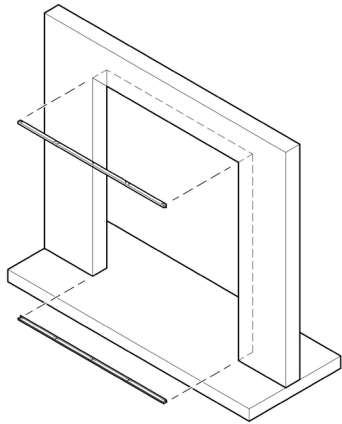


## FAST & EASY INSTALLATION

Designed for rapid assembly with our proprietary knockdown rail-and-mullion system.

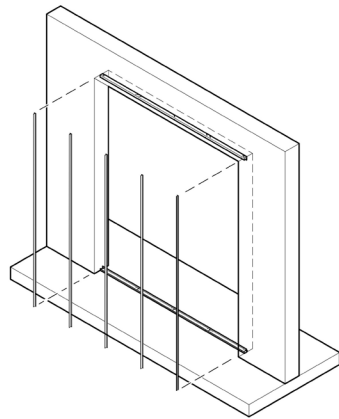
Partitions are delivered as kits and cut-to-fit on site without extensive in-field measurement. Mounted directly onto existing conditions, system can be set pre- or post-finish and glaze-ready with just 1-2 days of installation.

### STEP 1



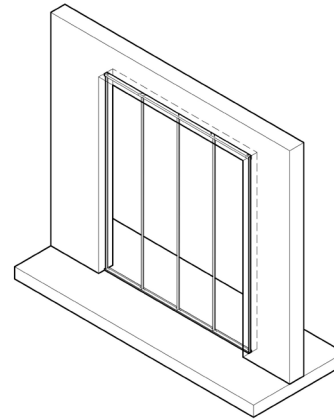
Top and bottom rails are cut to length and attached to existing condition.

### STEP 2



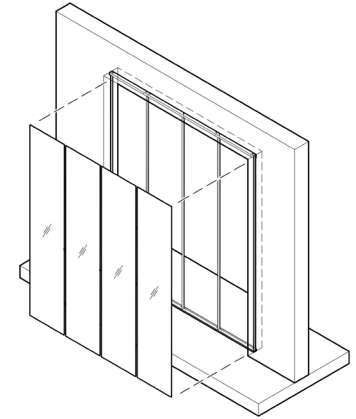
Mullion bars are cut to size on-site, set into rails and secured.

### STEP 3



Door and operable windows are installed at this stage and system is prepped for glazing.

### STEP 4



Glazing is set, and sealant is applied to seal partition.



## Exterior Storefront System

**CORTEZ** exterior storefronts are built from solid plate-steel fins with formed metal head and sill channels. The system boasts a slim sightline with a max height of up to 20 feet and can be stacked for both multi-story and curtain wall applications.

The sleek, industrial styling of the fin-shaped mullions adds depth and character to any facade and fits seamlessly into both modern and historic architecture.

## STRUCTURAL & ELEGANT

Designed to accommodate seismic movement, our system can be stacked multiple stories high and configured with crossbars for a gridded look.

System can be installed before or after surface finishing and can attach onto a wide range of opening conditions.

Supports heights up to 20' per story with a standard lite width of 24." Lite width can be customized and is compatible with all **CORTEZ** exterior door and window systems.

This system is not thermally broken.



TWO-STORY STOREFRONT  
(Shown with Tube Steel Doors)





## Signature Hardware

**STUDIO CORTEZ** offers an assortment of handmade hardware products designed specifically for our doors and windows.

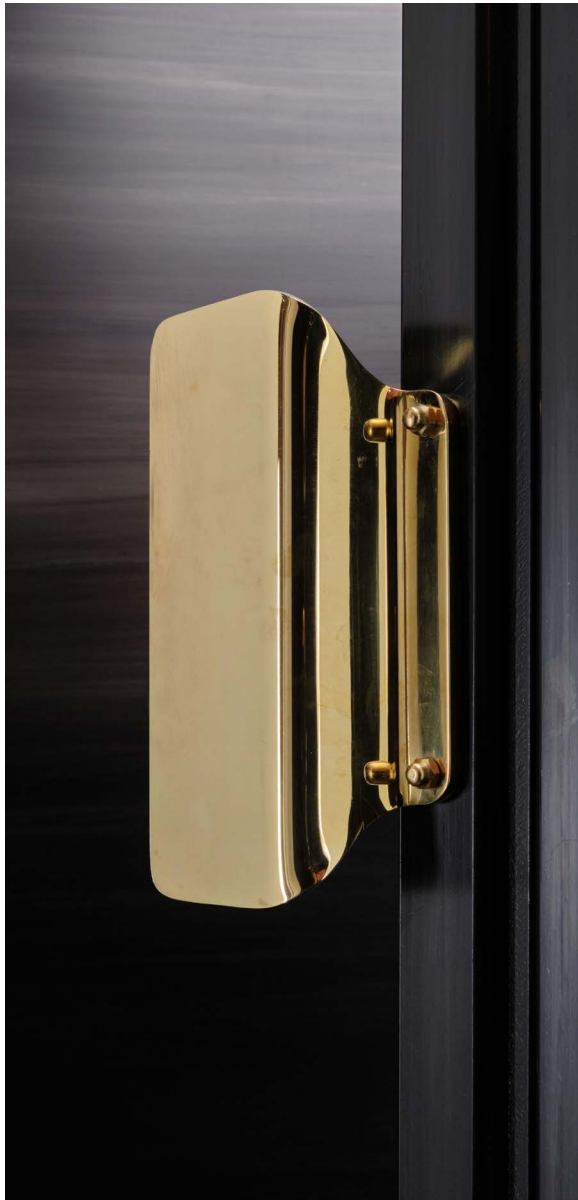
From handles and hinges, to latches and cremones, our one-of-a-kind hardware brings elegance and character to any space.



### **SINGLE & DOUBLE PEACOCK HANDLE**

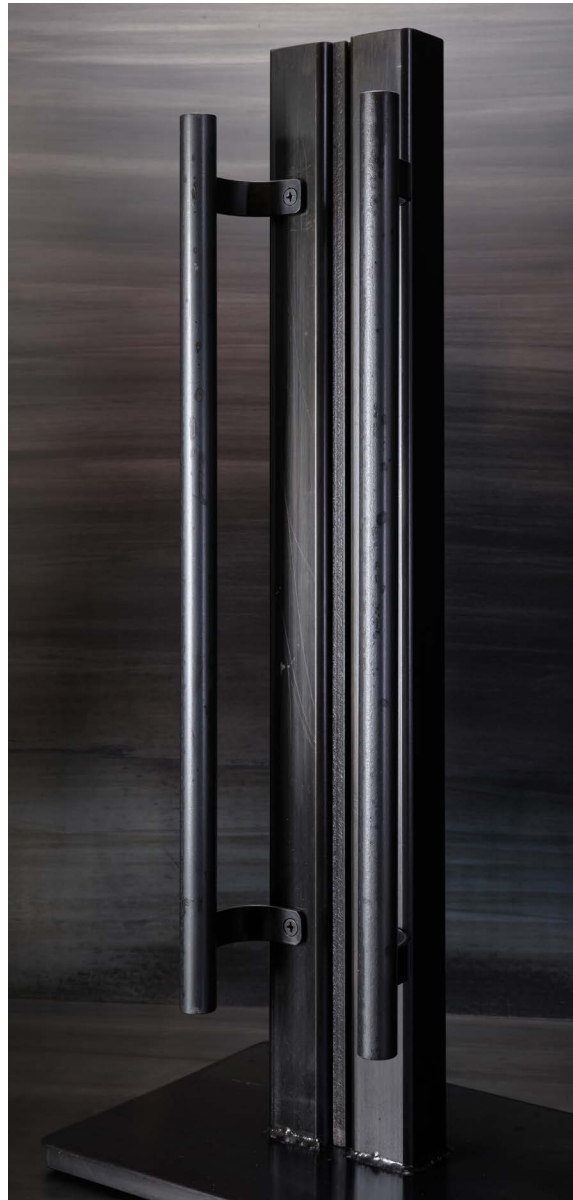
Bent steel and machined brass.  
Available in single or double configurations with magnetic thumb latch for sliding doors.





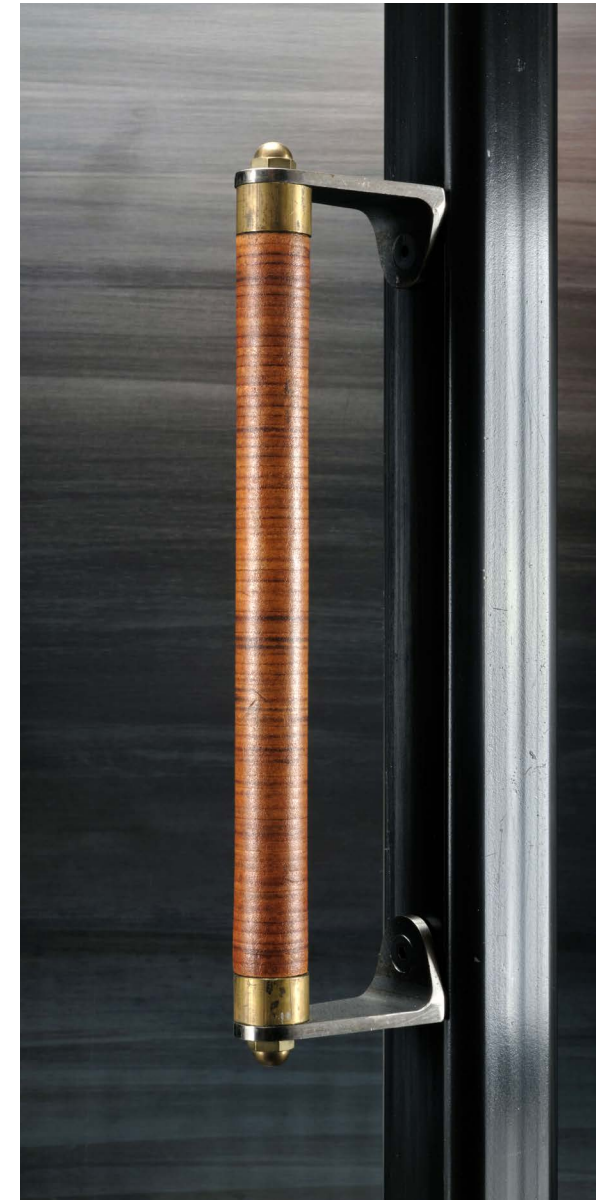
### **BRASS PULL HANDLE**

Solid brass, machined and folded.  
Available polished or satin finish.



### **ROUND BAR HANDLE**

Solid blackened steel round bar.  
Available in brass or leather wrapped.



### **CORTEZ BAR HANDLE**

Steel bar mounted on bent brackets.  
Available in brass, steel or leather.



### **CORTEZ CANE BOLT**

Bolt-action handle, milled brass body and keeper and a stainless steel rod.



### **GEAR LEVER CREMONE**

Plate steel body, machined gears and brass guides. Bolts top and bottom of door.



**CUSTOM WINDOW OPERATOR  
(Pulley Operator for Opening Skylight)**

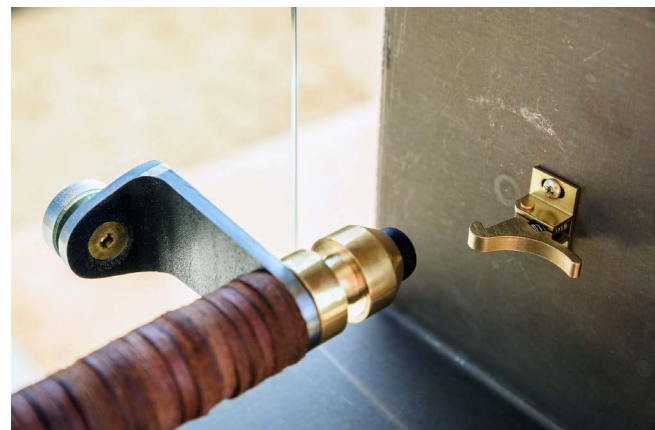
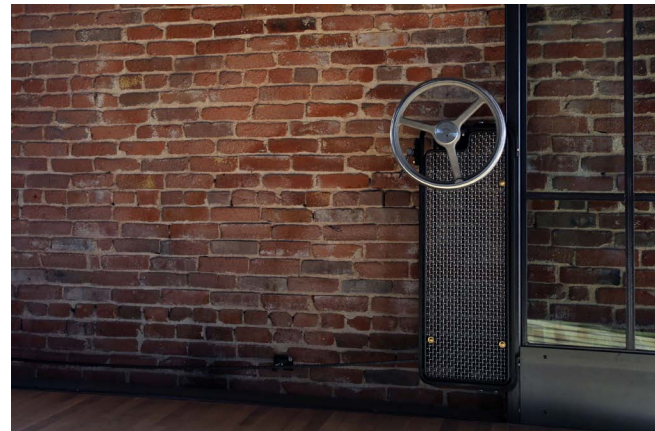
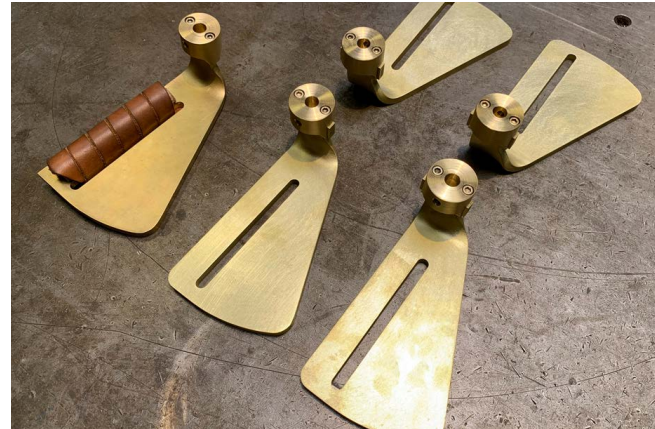
## Custom Design Builds

When you want something that truly cannot be found elsewhere, we're able to design and engineer custom solutions for one-of-a-kind problems.

Our long history of construction and fabrication experience means we can anticipate potential problems and design one-off mechanisms to resolve unique architectural challenges, particularly when off-the-shelf products are not sufficient.

Working with **STUDIO CORTEZ** from the beginning incorporates all those considerations into the design instead of having to fix and adjust things in the middle of a project.

This saves not only time and money, but also a tremendous amount of frustration for clients, contractors, and architects.



# Basic Product Information

<b>STANDARD PRODUCTS</b>	<b>PRODUCTION TIME (Est.)</b>	<b>APPLICATION</b>	<b>STANDARD GLAZING</b>
<b>Swiss Steel Door (3'x8')</b>	4-6 weeks	Interior Exterior	1/4" Tempered 5/8" IGU
<b>Swiss Steel Door (3'x9.5')</b>	4-6 weeks	Interior Exterior	1/4" Tempered 5/8" IGU
<b>Swiss Steel Door (Custom)</b>	6-8 weeks	Interior Exterior	1/4" Tempered 5/8" IGU
<b>Tube Steel Door</b>	6-8 weeks	Interior Exterior	1/4" Tempered 5/8" IGU
<b>Fixed Window (Gridless)</b>	4-6 weeks	Interior Exterior	1/4" Tempered 5/8" IGU
<b>Fixed Window (Gridded)</b>	4-6 weeks	Interior Exterior	1/4" Tempered 5/8" IGU
<b>Operable Window</b>	4-6 weeks	Interior Exterior	1/4" Tempered 5/8" IGU
<b>Knockdown Partition</b>	2-6 weeks	Interior	1/4" Tempered
<b>Exterior Storefront</b>	8-12 weeks	Exterior	1" IGU

Serving the greater **Los Angeles** area and **Ventura County**.  
Contact us for pricing and estimates.



## Contact

**323.663.9898**

Made@StudioCortez.com

Instagram: @Studio\_Cortez

www.StudioCortez.com



# Notes

