

# **CORTEZ TUBE STEEL SLIDING DOOR**

UP TO 3 OPERABLE PANELS

SINGLE OR DOUBLE GLAZE

TOP HANGING OR BOTTOM TRACK SYSTEMS AVAILABLE

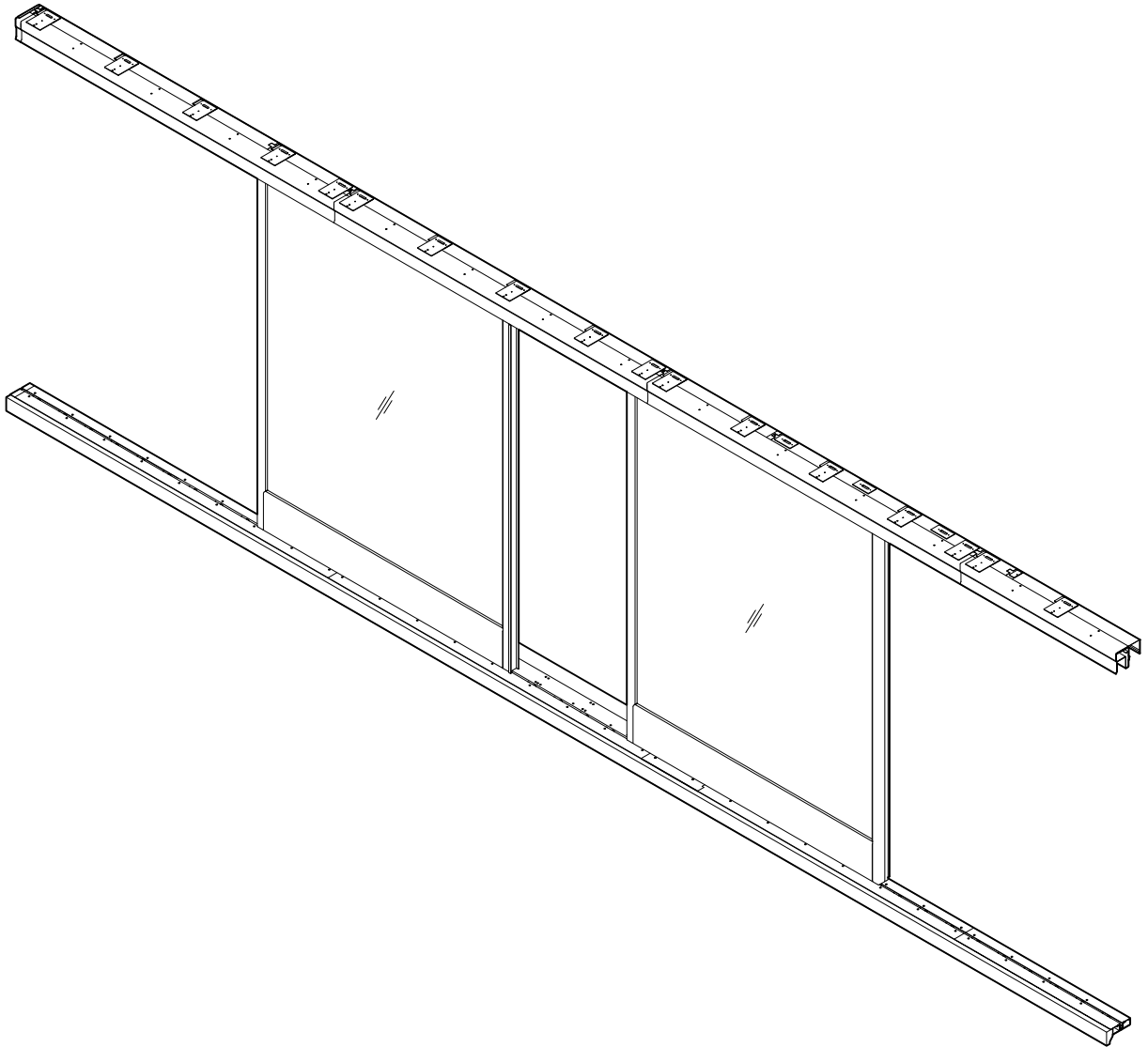
MULTIPLE LATCHING OPTIONS

SCHLAGE L-SERIES HANDLES BRONZE (STANDARD)

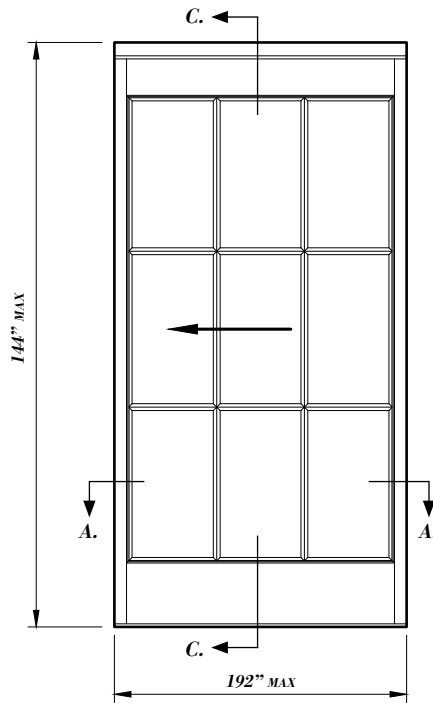
STANDARD SATIN CLEARCOAT OR POWDER COAT FINISH

GRID CONFIGURATION CAN BE CUSTOMIZED

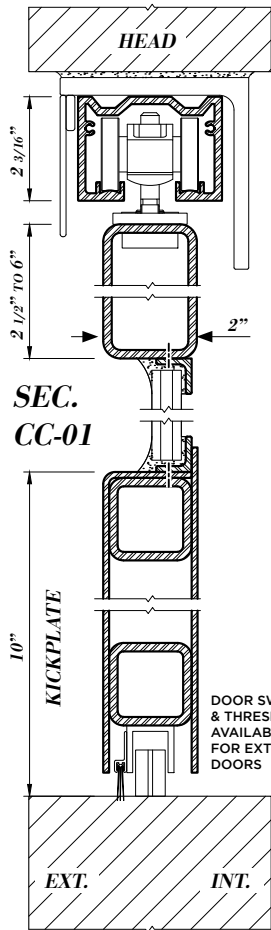
MAX HEIGHT OF 144" - MAX WIDTH OF 192" PER DOOR



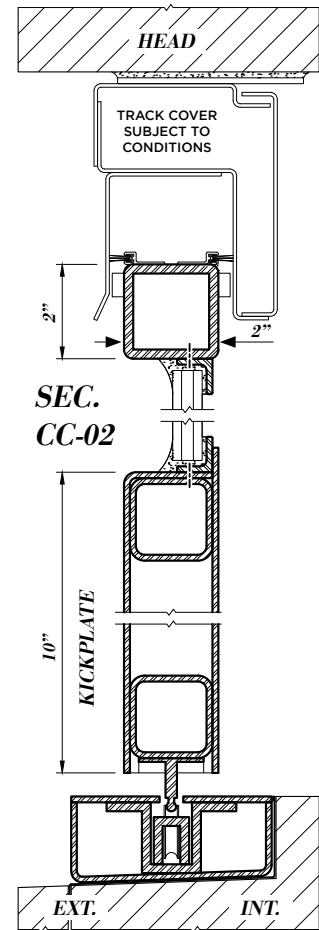
# SINGLE DOOR



# TOP TRACK



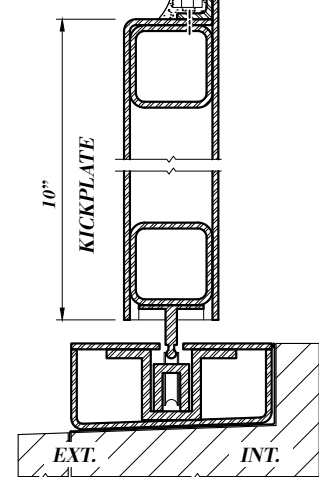
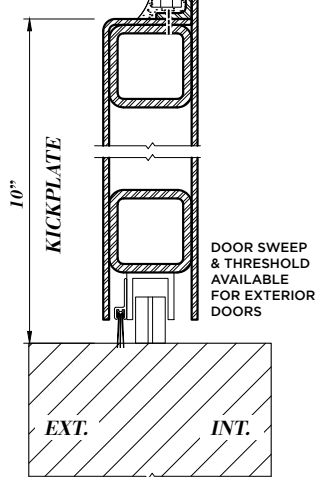
# FLUSH TRACK



SLIDER TRACK SELECTION  
DEPENDENT ON DESIGN  
AND CONDITIONS

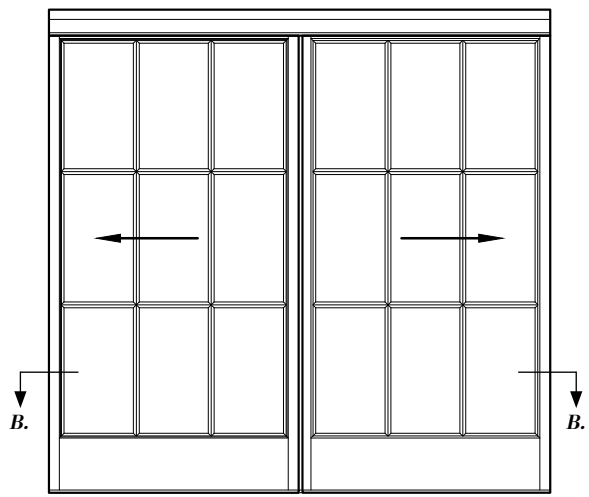
## SEC. CC-01

## SEC. CC-02

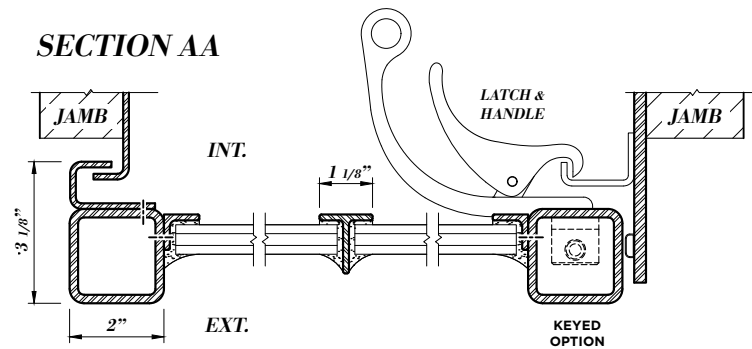


DOOR SWEEP  
& THRESHOLD  
AVAILABLE  
FOR EXTERIOR  
DOORS

# DOUBLE DOOR



## SECTION AA



## SECTION BB

