

FIXED GRID WINDOW SYSTEM

GRID CONFIGURATION PER
REQUIRED DESIGN

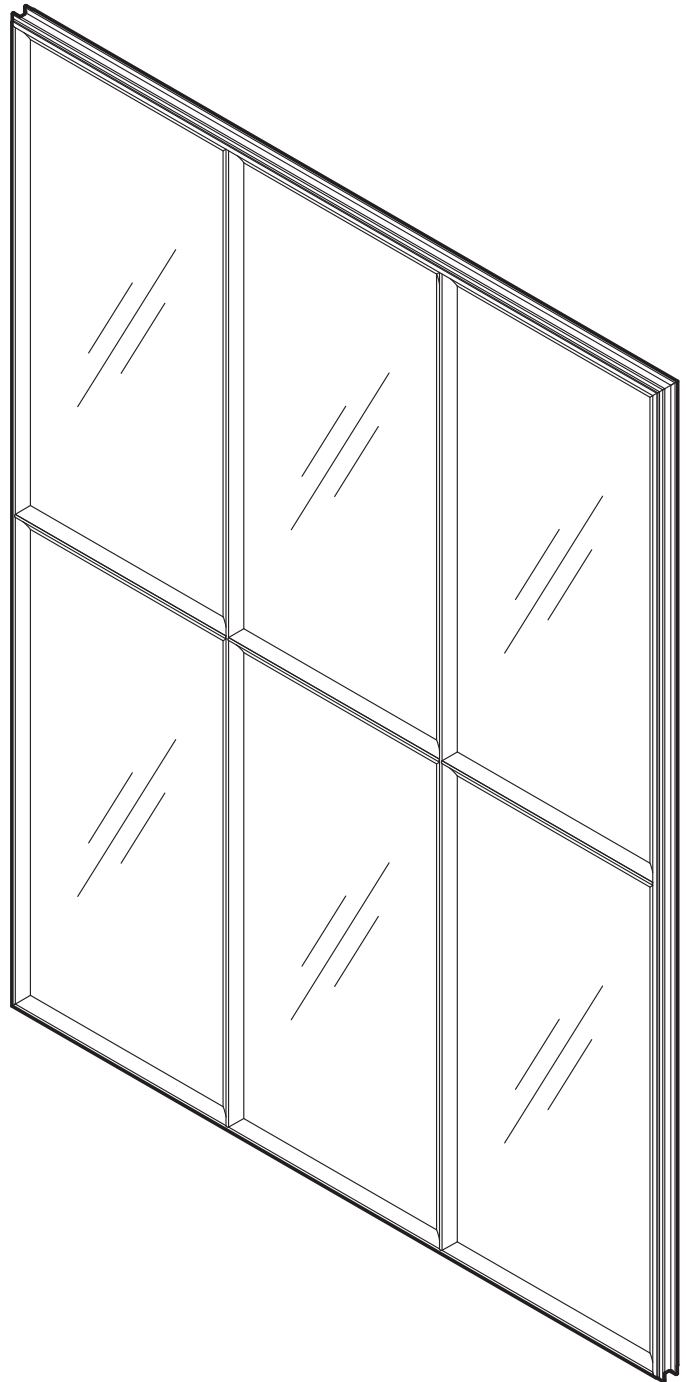
INTERIOR OR EXTERIOR

STANDARD SATIN CLEARCOAT
OR POWDER COAT FINISH

3 DIFFERENT STEEL PROFILES
AVAILABLE FOR VARYING WIDTHS
OF SIGHTLINES

MAXIMUM WIDTH UP TO 120"

MAXIMUM HEIGHT UP TO 144"

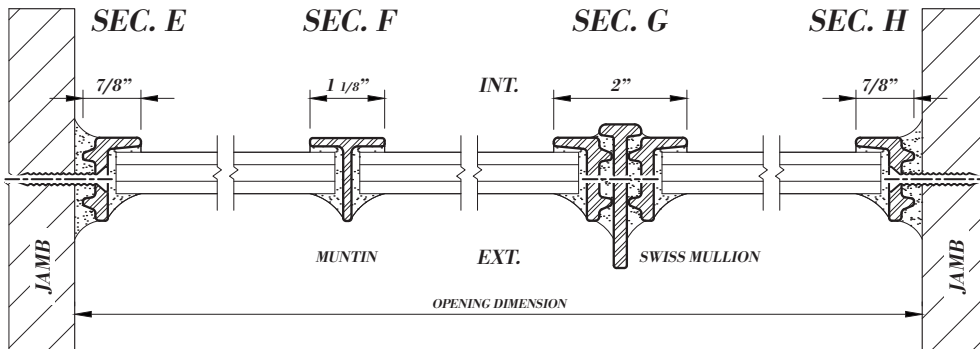
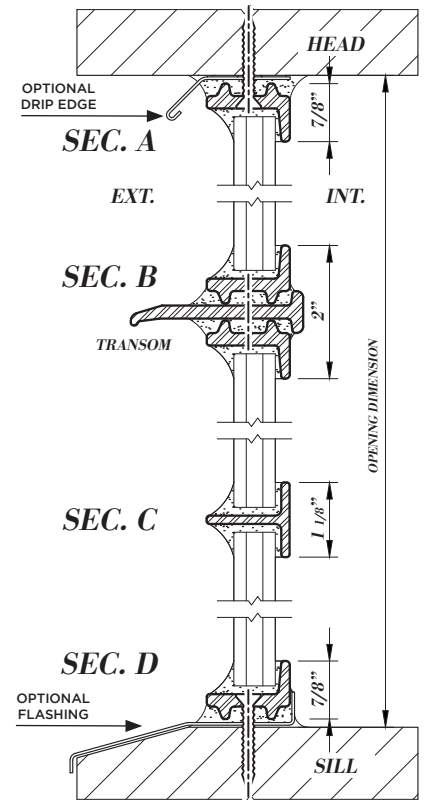
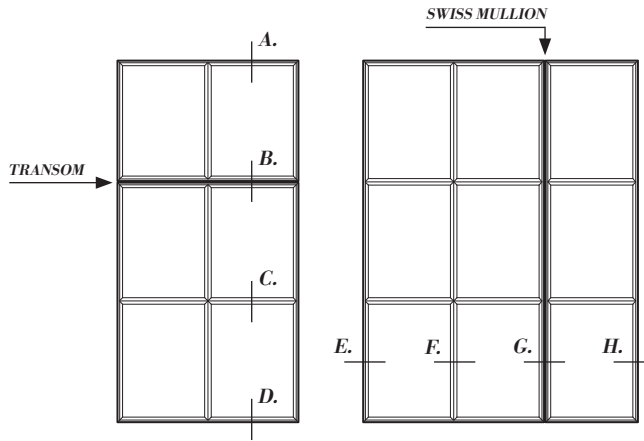


STANDARD GRID

Standard fixed grid system using 627 profile

Best for plum and level openings

Thinnest sight lines



H-BAR GRID

H-bar fixed grid system using 642 profile

Used in conjunction with slip tracks and jack screws for uneven or out of plum and level openings. (Refer to attachments)

Also available with the slimmer 640 H-bar profile

